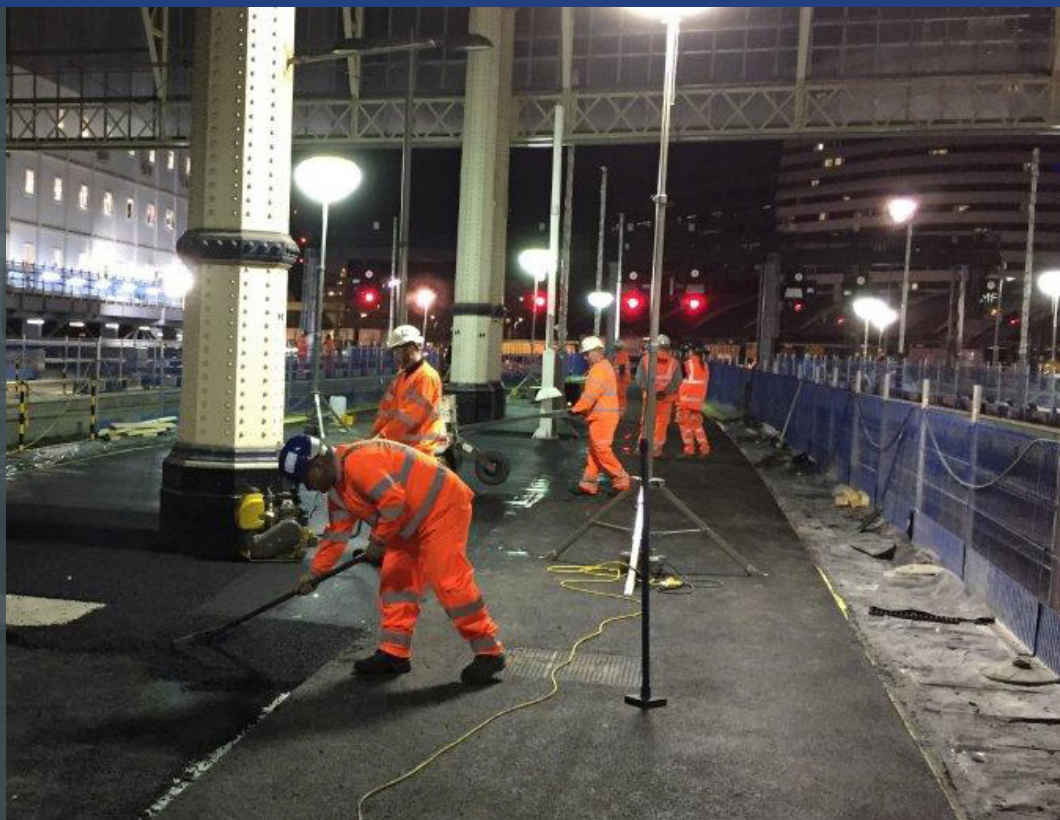


## The Project

Waterloo Station required platform realignment to cater for longer trains.



## Our Work

Working for client Walker Construction, Toppesfield were contracted to surface the new platforms.

Toppesfield resolved logistical difficulties caused by no direct-level access to the site. All materials were wheelbarrowed from delivery points on the street up via lift shifts to the platforms.

A weight restriction on the platforms limited the size of machinery that Toppesfield could use.

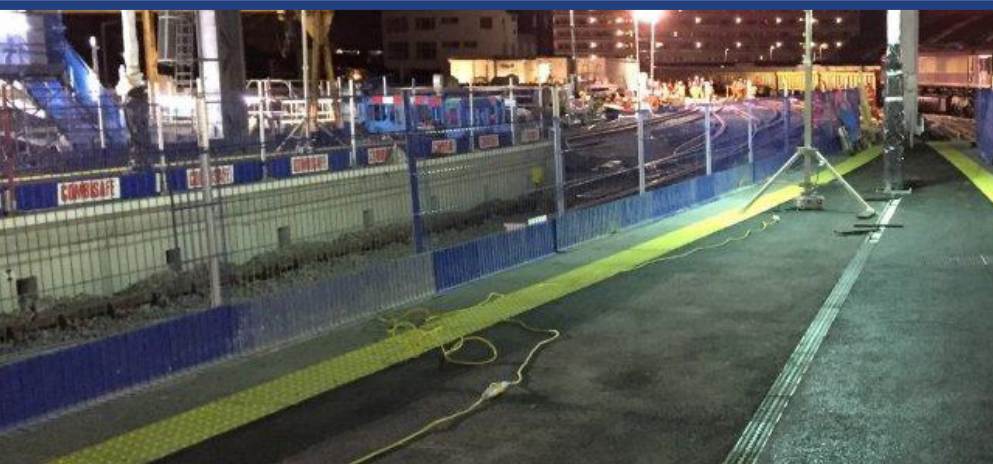
This was no issue, the company was able to choose one of its own smaller rollers from its larger fleet of plant.

Works were completed over the course of a week. In order for delivery to be completed in the short deadline Toppesfield were able to utilise multiple operational teams to deliver over a 24 hour working window.

In addition, due to Toppesfield excellent training all operatives were already Personal Track Safety trained.

## Results & Achievements

- Toppesfield accommodated the client's request to work 24 hours in order to complete the works quicker than intended
- Finished on time within the allocated programme duration of the August Blockade



"Toppesfield's flexibility to meet our client's programme requirements ensured that the Waterloo Blockade was completed on time"

Darren Fagg, Project Manager - Rail,  
Walkers Construction